



**BASKETBALL**  
**TASMANIA**

# NW PRESIDENTS MEETING

---

DISCUSSION NOTES

# Introduction:

Our current structure throughout the state is a vast improvement from before the governance review (2013) and Constitution Change (2014) however it is still not servicing the sport to the optimum level – reasons:

- CAMs are too small – only 2.5 employees through 17 CAMs.
- Catchment areas are not big enough to conduct local domestic rosters.
- CAMs are not interested in amalgamations.
- The sport does not have the capacity for growth (see above point).
- Generally, the current CAMs do not provide the full association services that the sport requires.
- Most current CAMs are (in fact) excellent 'Clubs' – they provide excellent services to organise teams into competitions and all the administration that goes with this.
- The current CAMs do not want to increase the services they provide (as per the vote at the BTAS AGM 2018). They are happy being very good clubs.

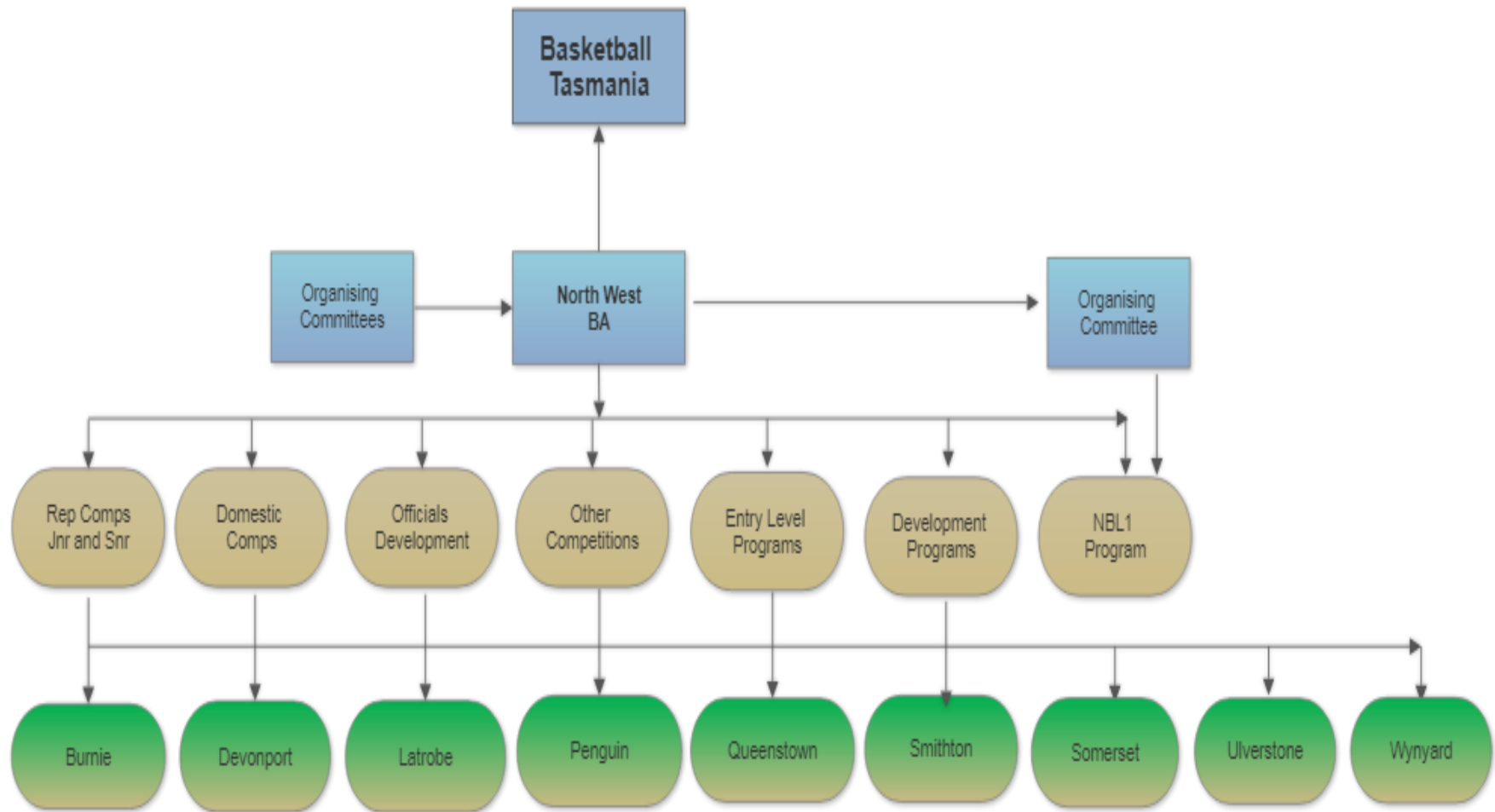
# Why are we looking at this now?

1. Ensuring we have 2 x NBL1 teams in Hobart in the next season.
2. Pressing deadline from Basketball Victoria to have our teams aligned under an association structure before 30 June 2020.
3. Desire from the NWBU to join with the Thunder to have a paid administration position.
4. The structure needs review again after making significant progress back in 2014.

# Links to Basketball in Tasmania Strategic Plan

1. **Our Mission:** "To be a leading, professional and accountable sport, recognised for our state led and delivered community programs. To be gender equal, all abilities, engaging sport with defined pathways for all. To develop competitive, high quality state and national level players, coaches and officials."
2. **Our Vision:** "Basketball is the sport of choice for Tasmanians".
3. **Our Culture – Innovation** – "We're improving, learning and driving change".
4. **Participation and Growth:** "Basketball in Tasmania participation is inclusive and reaches 20% of Tasmanians annually with a retained membership of 20,000 registered members."
5. **Competitions:** "Breadth of basketball programs and competitions at all levels available state-wide".
6. **Athlete Development and Pathways:** "Increase quality of local basketball development programs".
7. **Governance:** "State-wide unified culture embedded.
8. **Governance:** "Increase professionalism of basketball administration at all levels".
9. **Service delivery:** "Basketball organisations are continuously improving and proactively working together."

# 1 x North West CAM Model



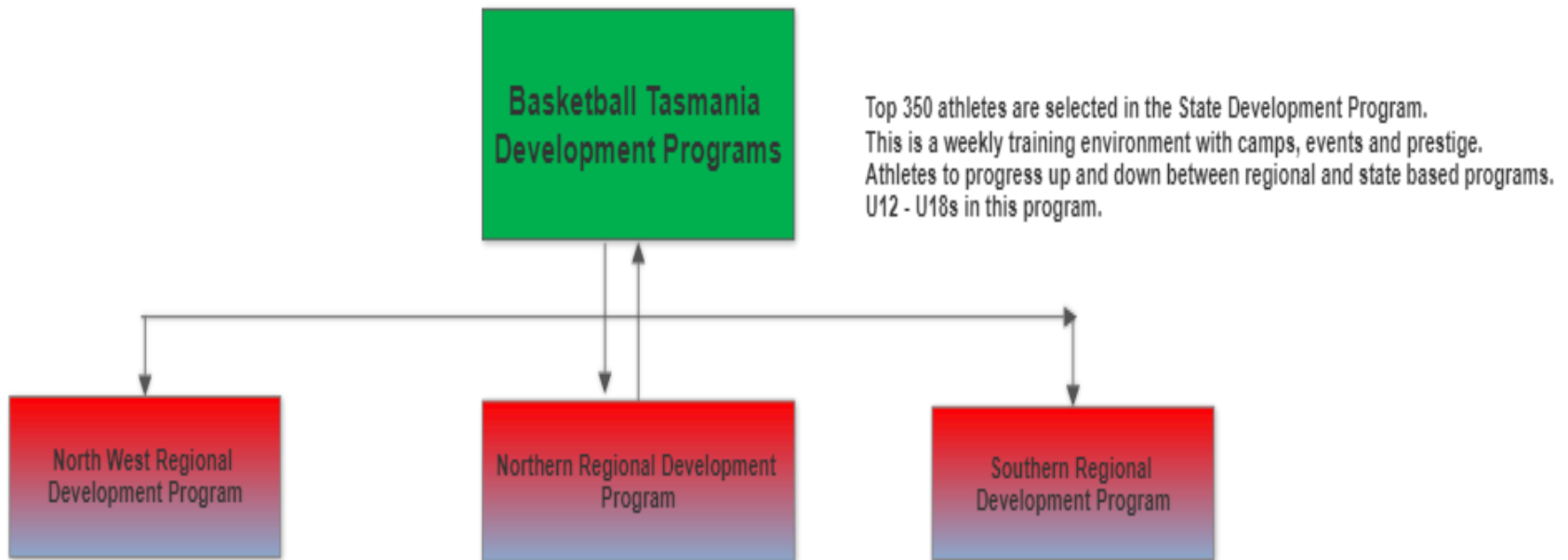
# Benefits of the 3 x CAMs State wide Model:

1. We can resource the 3 x CAMs state-wide to provide the full services of basketball associations with large catchment areas (over 3000 members each).
2. We can incorporate the NBL1 clubs into the new association structure – ensuring their viability long term and meeting the league requirements for them to be part of our association structure.
3. Opportunity to run better representative competitions. From a state perspective, BTAS would continue to run the Tri-Series (regional) and State Club Championships (for the clubs). Regionally, we would have better representative competitions that are consistent with the rest of the state.
4. Balances voting out better throughout the state with clubs voting – either 'one club one vote' or 'weighted voting' system.
5. Clubs can do what they do best – organise teams for competitions.
6. Professional model with minimum of General Manager and Development Officer or Admin Officer employed by each CAM.
7. Will drive participation rates with more activity offered and capacity for growth.

# Revenue Streams of 3 x CAMs State wide Model:

1. **Competitions** – representative in region and domestic competitions, basketball for all ages and standards, other forms (eg. 3x3).
2. **Entry Level Programs** – running Aussie Hoops every term.
3. **Development Programs** – 2<sup>nd</sup> Tier programs below the state program.
4. **NBL1 Program** – flagship program that the association budgets and invests resources into.
5. **Schools Grant and Other Grants.**
6. **Registration Fee component.**
7. **Merchandising.**
8. **Holiday Camps** – all working together using the McDonalds sponsorship to create Win / Win.
9. **Sponsorships and Partnerships.**

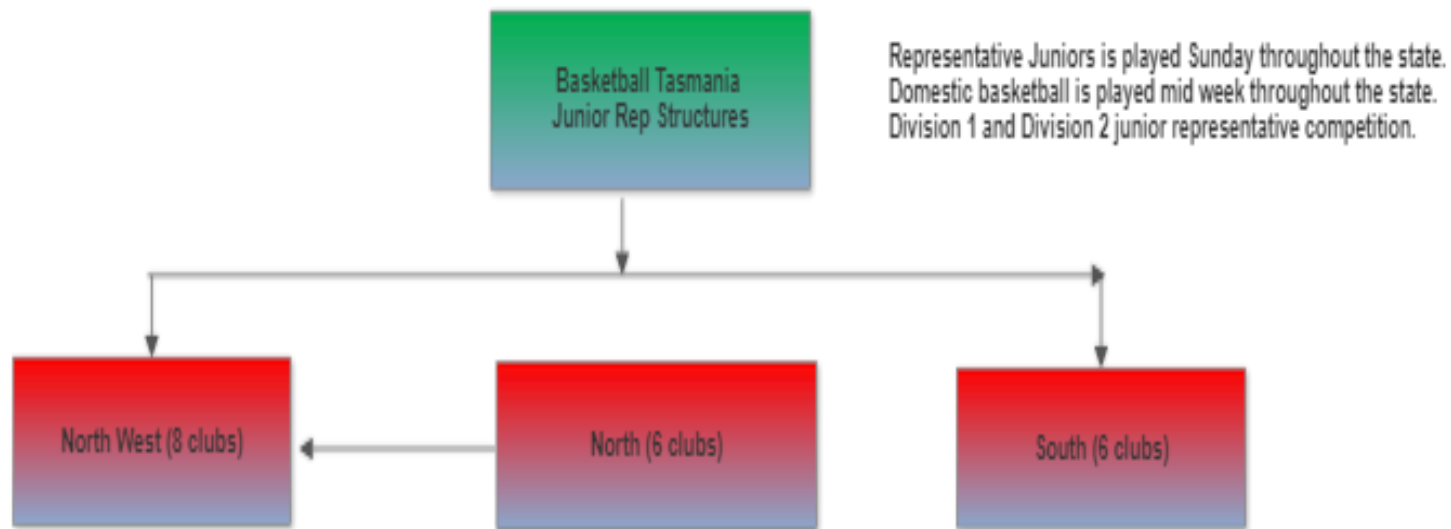
# How the Development Programs will work:



Aim of 100 athletes in each of the three regional programs. These might be called "Participation Programs" or "Rep Ready Programs" - something that is below the state prestige. U10 - U16's in this program. Athletes to progress up and down between regional and state based programs. Weekly training in term but no camps, no uniforms and no events.



# How the Junior Rep Structure will work:



North and North West Clubs to play together in one league.  
Teams to play 2 games when on the road and 1 game when at home on the Sunday.  
All venues will be used every rostered Sunday for this competition.

South clubs to play Central Venue at KSC each Sunday.

# NW Membership Trends 2008 - 2018

	2008	2018
Burnie	425	294
Devonport	1111	889
Latrobe	278	184
Penguin	296	240
Queenstown	254	241
Smithton	204	248
Somerset	300	164
Ulverstone	363	230
Wynyard	278	159
<b>Totals</b>	<b>3509</b>	<b>2649</b>
<b>10 Year Membership Trends</b>		
North West	Decline of	25%
North	Increase of	106%
South	Increase of	31%

# NW Junior Intertown Summary 2019

	<b>Good Games</b>	<b>1-Sided</b>	<b>Blowouts</b>	<b>Thrashings</b>	<b>Total</b>
	Less than 10 point margins	10 - 20 point margins	21 - 40 point margins	Over 40 point margins	<b>Games</b>
U12B	12	6	24	14	56
U12G	16	14	19	7	56
U14B	9	10	17	20	56
U14G	9	12	13	8	42
U16B	7	6	10	19	42
U16G	4	0	13	13	30
U18B	26	13	15	2	56
U18G	7	6	5	0	18
<b>Totals</b>	<b>90</b>	<b>67</b>	<b>116</b>	<b>83</b>	<b>356</b>
Percentage	25%	19%	33%	23%	
Industry Aim	45%	35%	15%	5%	

# NW Junior Intertown Summary 2019 – Competition Issues:

1. Only 1 in 4 games (industry aim is 45%) are classed as good games (less than 10 point margins).
2. More than half the games (56%) are decided by 21 points or more.
3. 23% of games are 'thrashings' – over 40 point margins (industry aim 5%).
4. There are nearly as many 'thrashings' (over 40 points) as there are 'good games' (single figure margins). In good competition, there are 9 x 'good games' to every 1 x 'thrashing'.
5. U18 Boys was by far the best grade for good competition with 46% of games as single figure margins (good games) and only 4% as over 40 points (thrashings).
6. Major concerns at the Under 12 level with 75% of games being decided by more than 10 points and 57% of games being decided by more than 20 points - despite not scoring as highly in this level. The imbalance in competition is only going to get worse if the present structure remained.
7. 8 teams were missing from the current structure of 64 teams.

## Illustrative Example – Under 12 Boys

Division 1 (6 teams)		Division 2 (8 teams)
Devonport		Latrobe
Burnie		Ulverstone
Penguin		Burnie 2
Smithton		Somerset
City of Launceston		Wynyard
Devils Launceston		Saints Launceston
		Trojans Launceston
		Japara Launceston
<b>Notes:</b>		
* Better competition and closer results.		
* Clubs can have multiple teams in each age group.		
* Clubs can qualify multiple teams in Division 1 (quite rare but achievable).		

## NW Junior Intertown Summary 2019 – Current Travel:

	L	D	U	P	B	So	W	Sm		Kilometres Travelled
Latrobe		11	29	40	56	63	74	140		826
Devonport	11		19	30	46	53	64	130		706
Ulverstone	29	19		13	29	36	47	113		572
Penguin	40	30	13		18	25	36	102		528
Burnie	56	46	29	18		7	18	84		516
Somerset	63	53	36	25	7		11	77		544
Wynyard	74	64	47	36	18	11		66		632
Smithton	140	130	113	102	84	77	66			1424
										5748
Notes:										
Return trip is double these amounts (factored into the calculation).										
Home and Away over 14 rounds										

## U12B Division 1 Travel Example: (note example for illustrative purposes only)

[illegible]

### Notes:

Return trip is double these amounts (factored into the calculations)

Home and Away - 10 games + 1.5 loading to give the 15 games (factored into calculations).

Note: Central venue games in Devonport.

Note: Central venue games in Burnie.

Note: extra game in this model so travel is very comparable under both models.